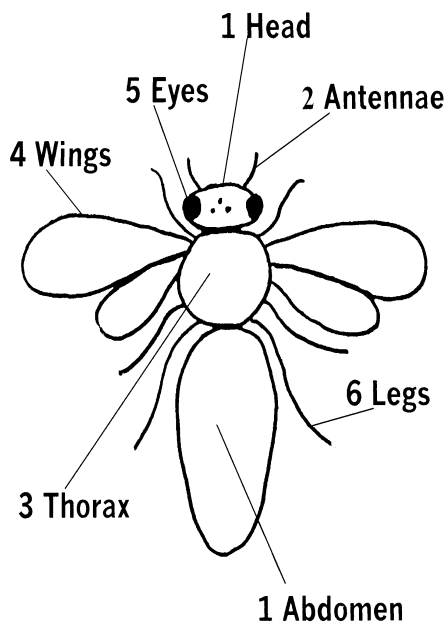


Beebuzz

This is a game in which you take turns with your friends to throw a dice and draw a bee on a piece of paper. Any number can play. To play, you need only a piece of paper, a pencil and a six-sided dice. The winner is the one who first completes drawing the bee.

Before playing, first print out the picture so you can see what to draw. You then throw the dice in turn. You have one throw per turn and, depending on the number indicated on the dice, you can draw a part of the bee. To start your drawing you must first throw a "3" because all the other parts of a bee come off the thorax. If you have already drawn the part indicated by the dice on your turn, then you cannot draw anything. You must wait until your turn comes round again to throw the dice and maybe you will be luckier this time.



- To start to draw get a "3"
- For a first "1" draw either the head or the abdomen
- For a second "1" draw the one you didn't draw last time
- For a "2" draw the two antennae but only if you have drawn the head
- For a "4" draw the four wings
- For a "5" draw the 2 big eyes on the side of the head and the 3 little eyes on top of the head (only if you have drawn the head)
- For a 6 draw the 6 legs