

WEST SUSSEX BEEKEEPERS' ASSOCIATION



Website www.britishbee.org.uk/local/westsussex

County News – SEPTEMBER 2010

If you wish to offer material for inclusion in future editions of "County News", please contact John Glover at glover.fetchingshollow@gmail.com

Around the Divisions

All Members are welcome to attend any Divisional meeting but prior arrangement is necessary in the case of any apiary meeting

Chichester Division meet on 15th September when their speaker is Margaret Johnson with 'Tips and Tricks with Honey and Wax'. Margaret is a member of Hampshire Beekeepers, has spoken at the BBKA Spring Convention and is a former member of the BBKA Executive. Her husband, Alan, a former President of the BBKA will be accompanying her and will also be contributing to the evening.

Wisborough Green Division will hold apiary meetings at Dounhurst, Skiff lane, Loxwood as follows: -

Sat 18 Beginners/Intermediate at 12:00 - Advanced at 2:30 p.m.
19th February 2011 – Annual Beginners Day at Pulborough Village Hall

Further details from **John Glover**
glover.fetchingshollow@gmail.com or website www.wgbka.org.uk

Worthing Division

The Findon Sheep Fair and Honey Festival will take place on **Saturday 11th September**.

On **Thursday 9th September**, the meeting will consider " How the Beekeeping Season went for you"? and "Preparation for winter – Bee requirements. Varroa Treatment with Thymol application" by Audrey Gibson- Poole

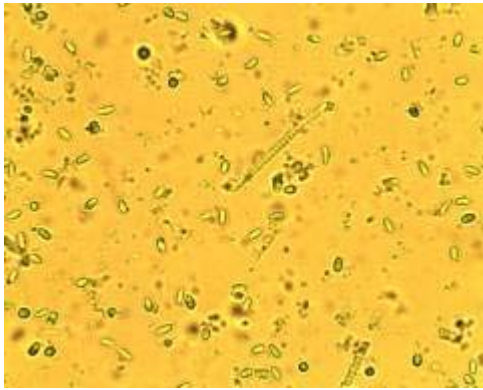
More information, contact **Sarah Rose** on 01903 262446 or website www.worthingbeekeepers.org.uk

+++++

The 2011 Annual Bee Market & Auction will be held on Saturday 30th April at Brinsbury campus, Pulborough. Full details will be available early in the New Year.

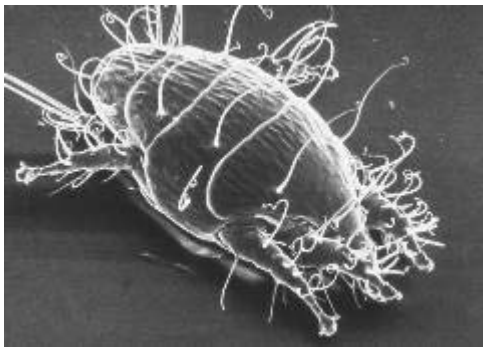
National Honey Show will take place at Weybridge 28th – 30th October

Microscopy



Representatives from each of our Divisions attended a morning microscopy workshop, which was presented by Regional Bee Inspector, Alan Byham with support from Diane Steele.

As a result of this, the Association now has at least 12 members who have attained the skills and knowledge necessary to diagnose *Nosema ceranae* and *Nosema apis*, in addition to Acarine (Tracheal mites).



The intention is that each Division will use these skills to set up “Bee Health Clinics” aimed to provide support to members who have any specific concerns about the health of their bees, and to run sessions for any member to submit their own bees for analysis – a costly process if done by the NBU.

For more information, please contact your Division.

(Pictures of *Nosema* spores and Tracheal mite courtesy of NBU)
www.nationalbeeunit.com/